

The background of the entire page is a light blue architectural site plan. It shows various building footprints, courtyards, and a winding waterway or canal. The lines are thin and light blue, creating a technical drawing aesthetic. The main title is overlaid on the upper left portion of this plan.

THE WHARF STUDIOS LONDON

SITE LAYOUT and STAGE PLANS

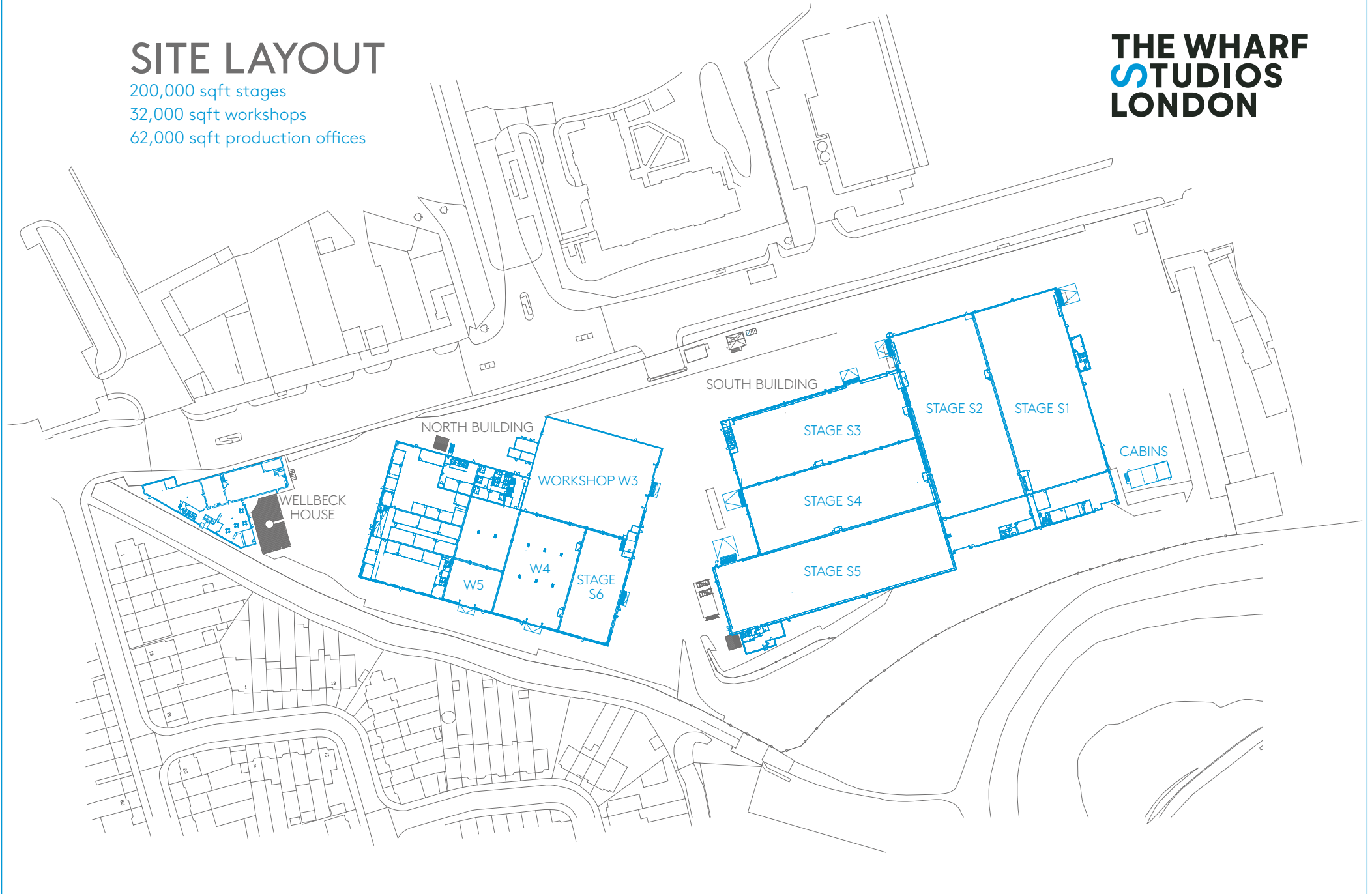
Issue 1.1 March 2023

Not to scale

SITE LAYOUT

200,000 sqft stages
32,000 sqft workshops
62,000 sqft production offices

THE WHARF
STUDIOS
LONDON



STAGE S1

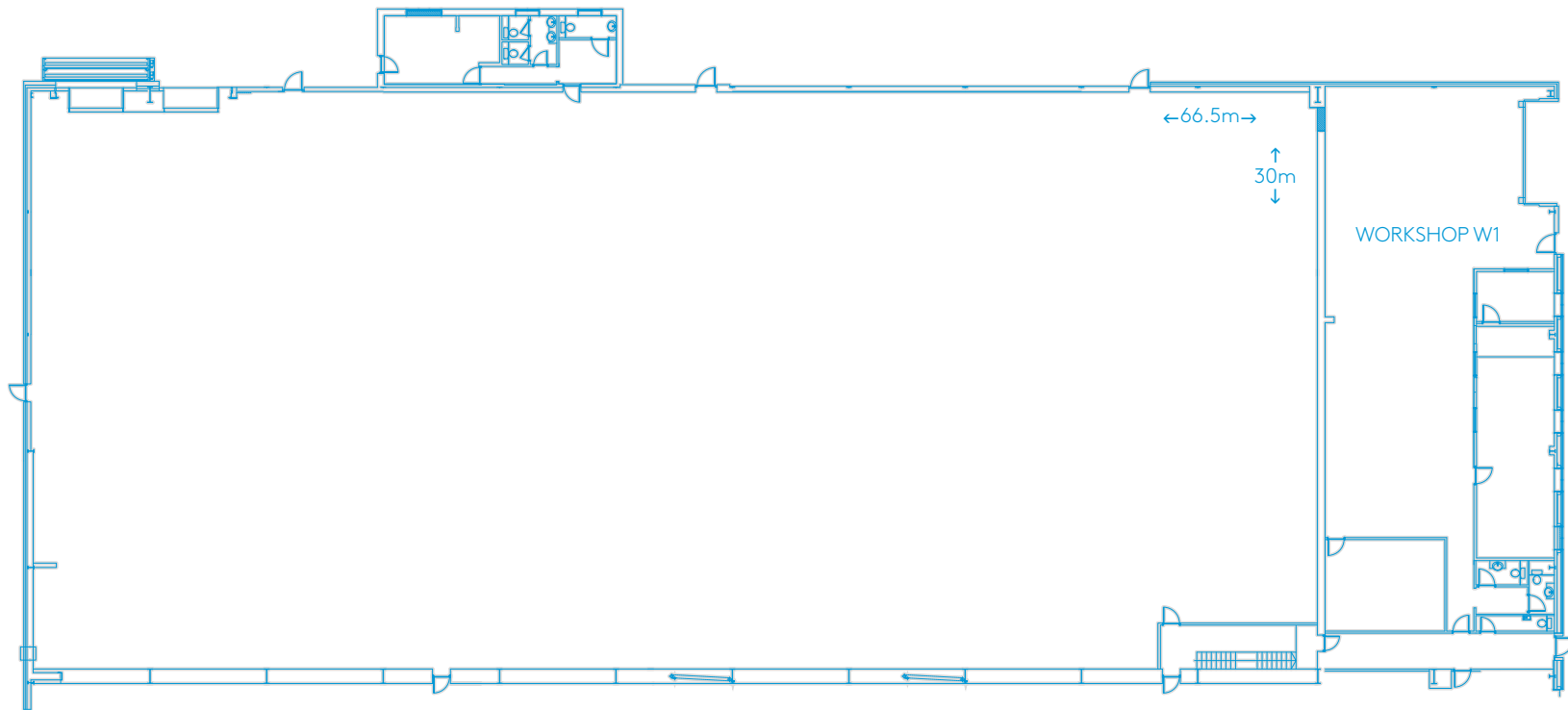
21,797 sqft/2025m²

Height: 46 ft/14m

Workshop W1

3703 sqft/365m²

THE WHARF
STUDIOS
LONDON



STAGE S2

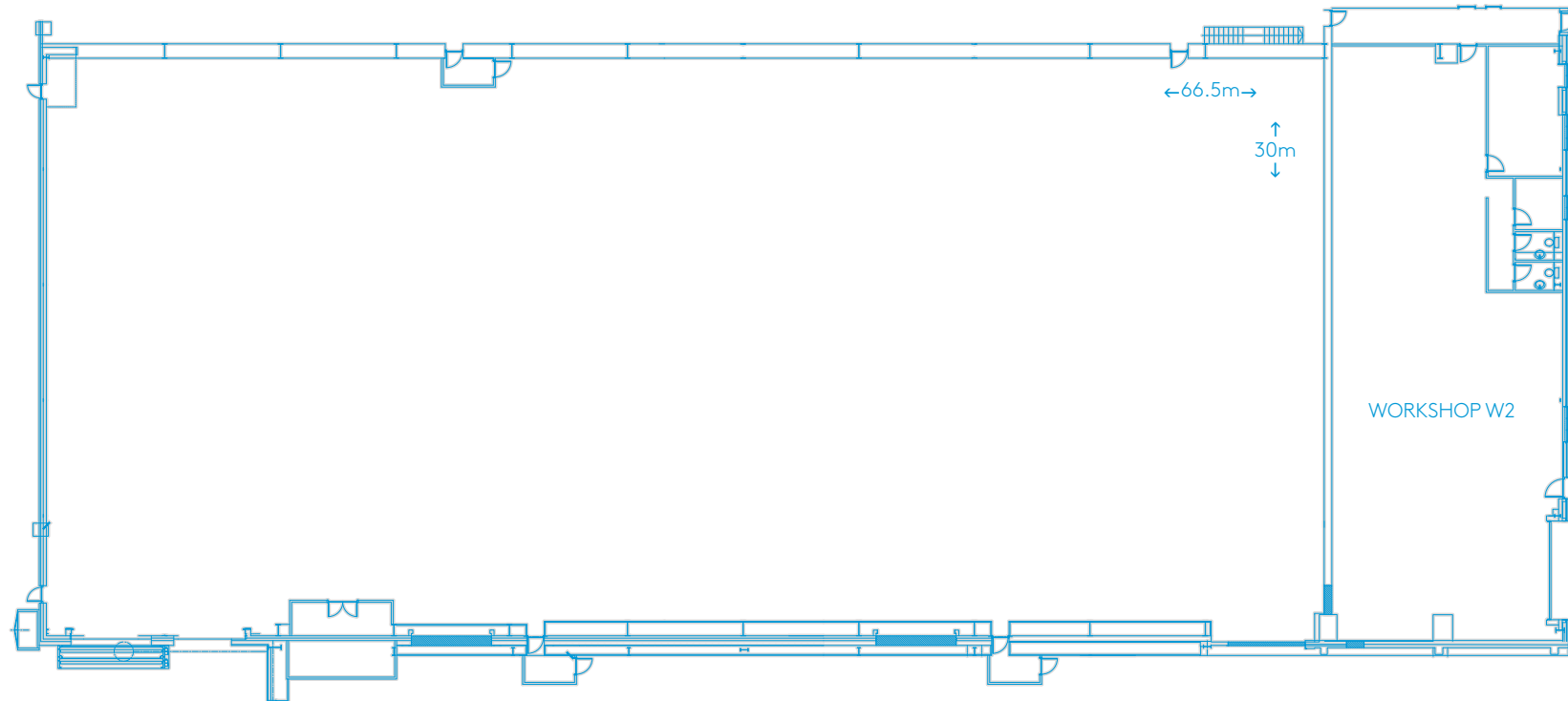
21,937 sqft/2030m²

Height: 46 ft/14m

Workshop W2

3918 sqft/364m²

THE WHARF
STUDIOS
LONDON

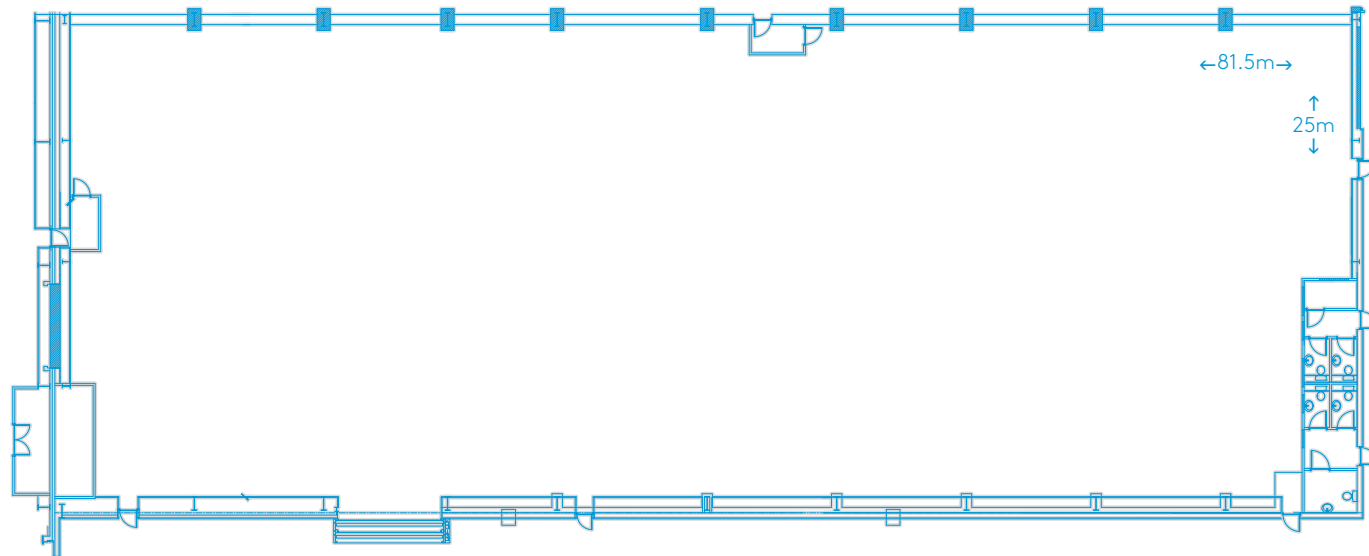


STAGE S3

16,576 sqft/1540m²

Height: 34 ft/10.3m

THE WHARF
STUDIOS
LONDON

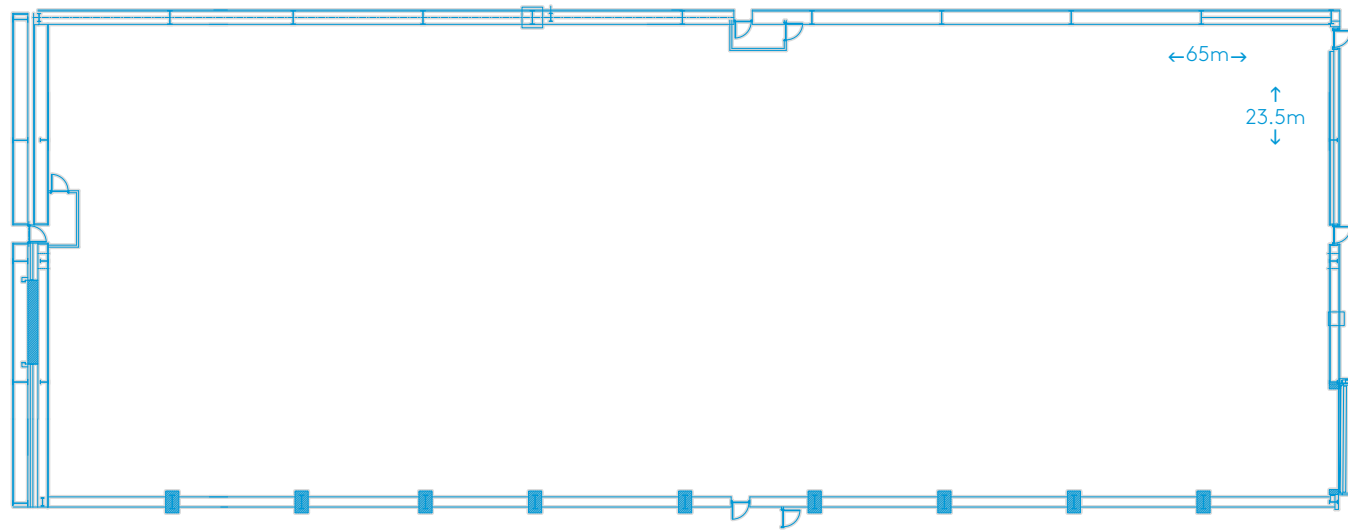


STAGE S4

16,770 sqft/1557m²

Height: 34 ft/10.3m

THE WHARF
STUDIOS
LONDON

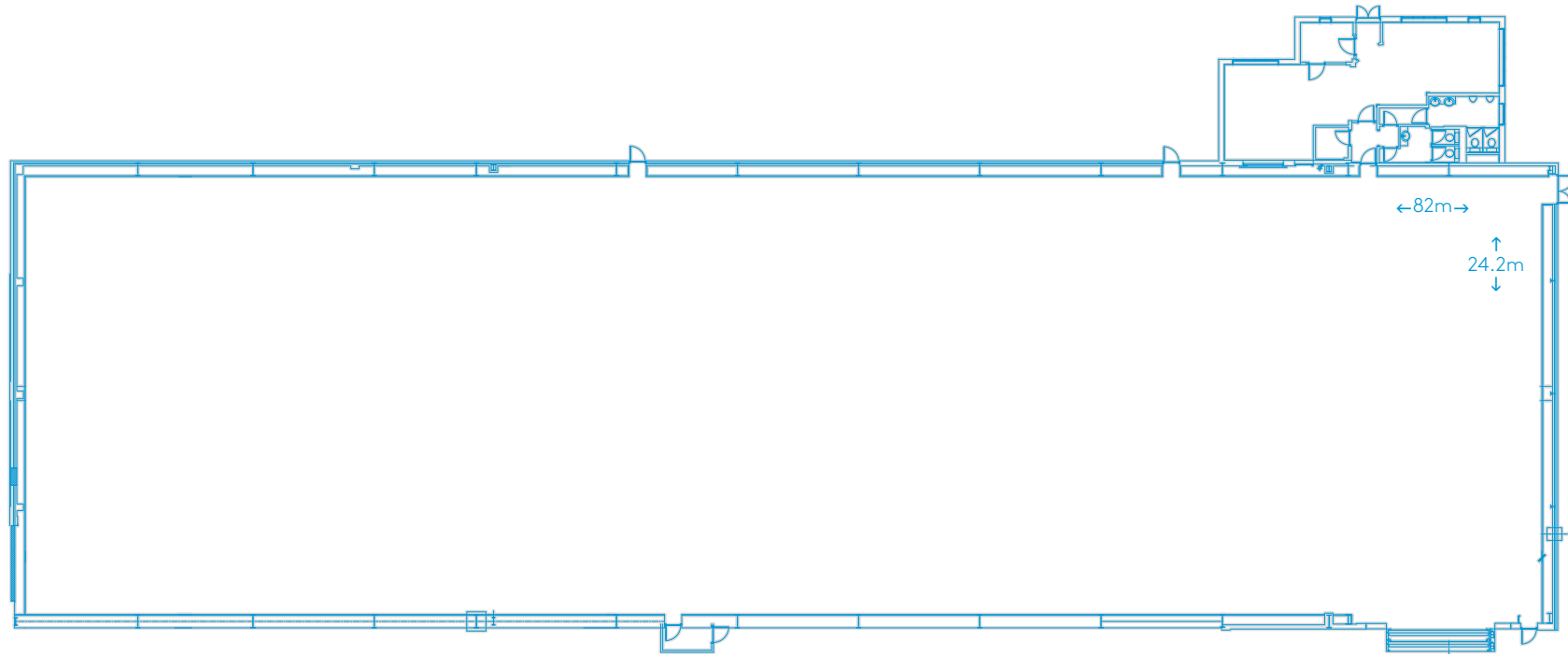


STAGE S5

21,850 sqft / 2030m²

Height: 33 ft / 10m

THE WHARF
STUDIOS
LONDON



STAGE S6

7,276 sqft/676m²

Height 26 ft/8m

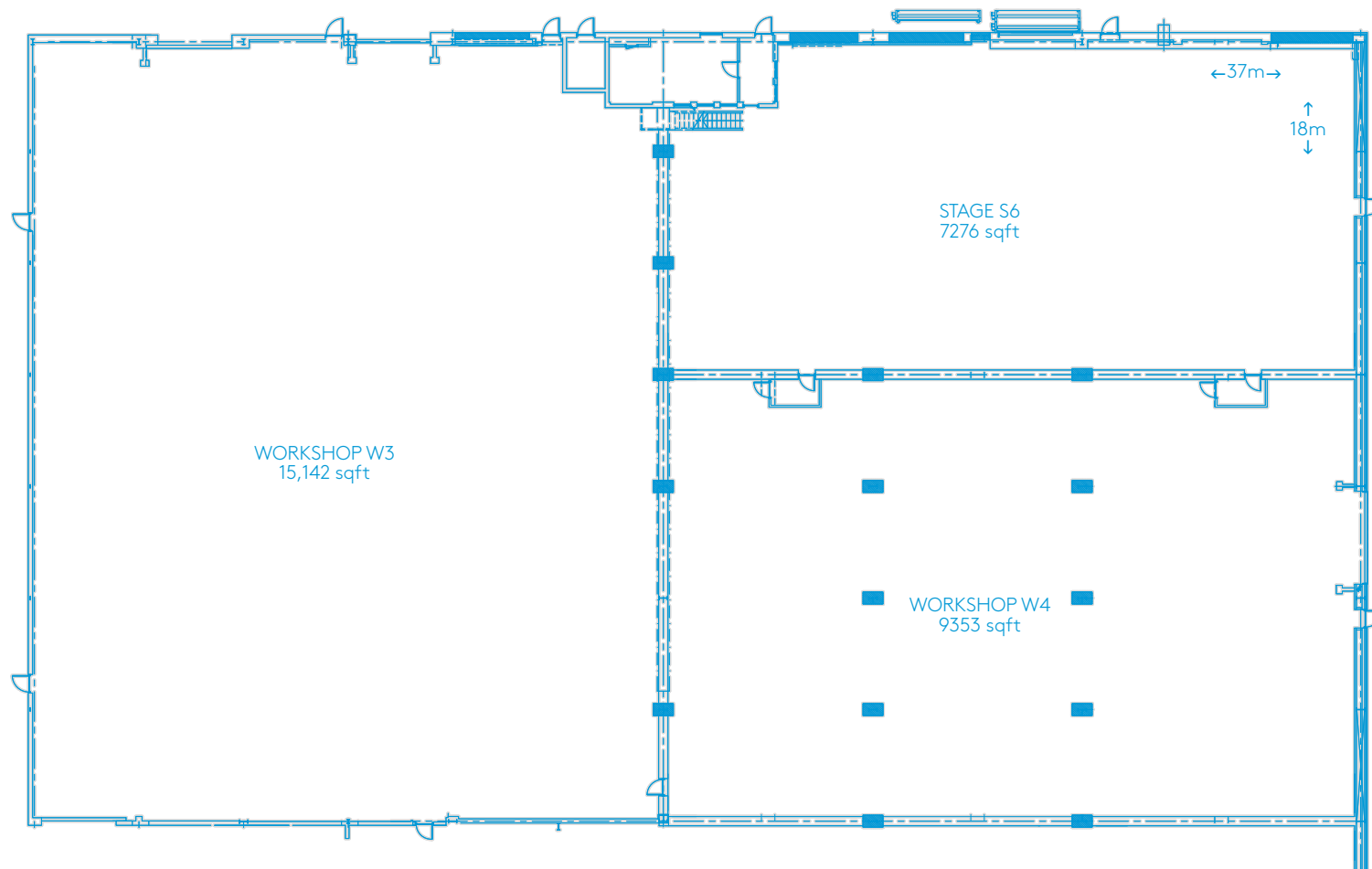
Workshop W3

15,142 sqft/1406m²

Workshop W4

9353 sqft/869m²

THE WHARF
STUDIOS
LONDON



STAGE S6 and OFFICES

7,276 sqft/676m²

Height 26 ft/8m

Workshop W3

15,142 sqft/1406m²

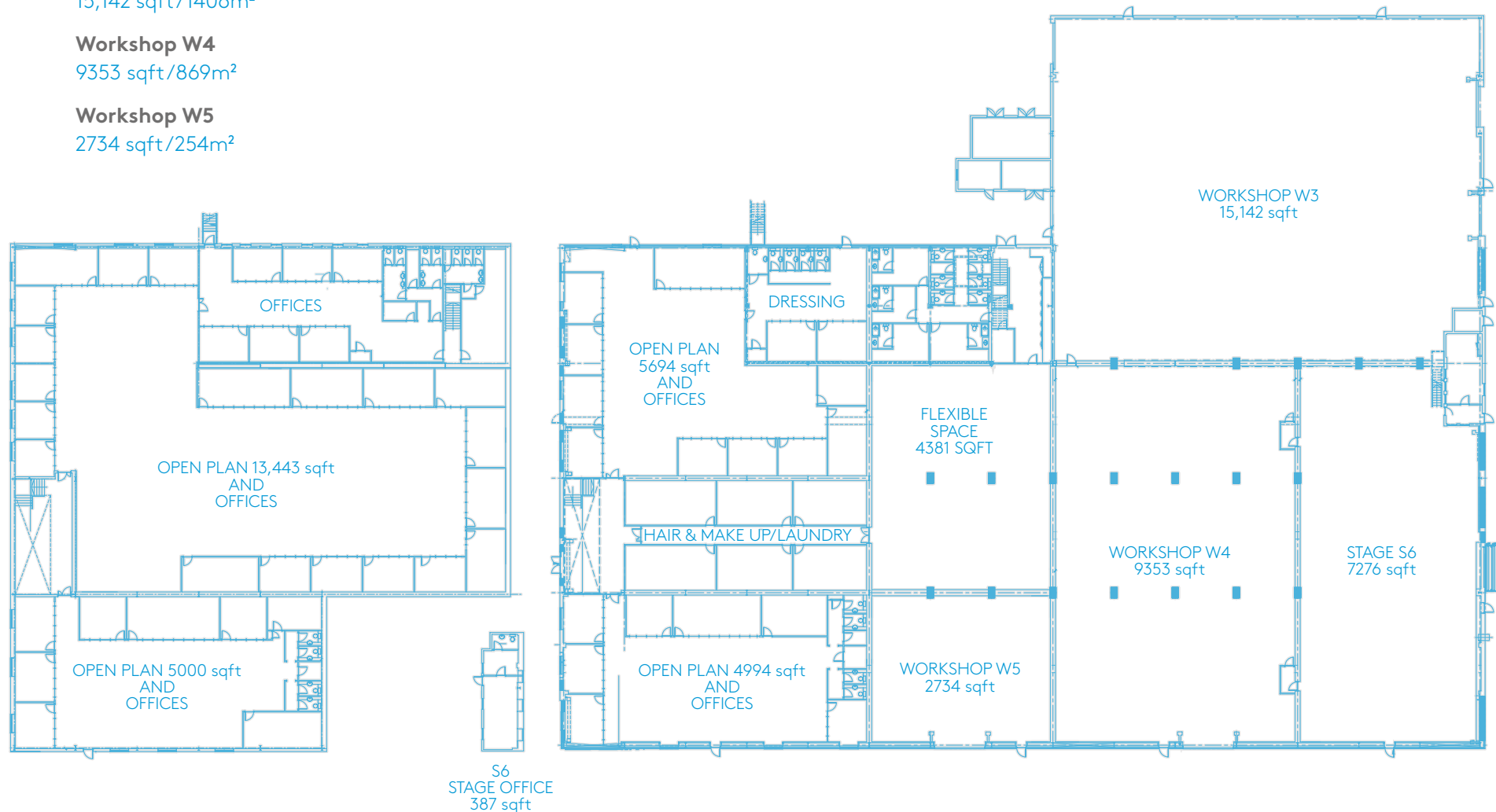
Workshop W4

9353 sqft/869m²

Workshop W5

2734 sqft/254m²

THE WHARF
STUDIOS
LONDON

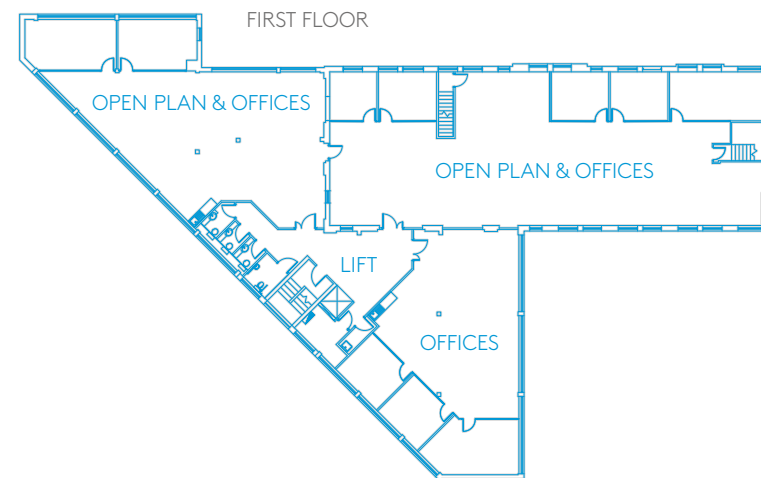
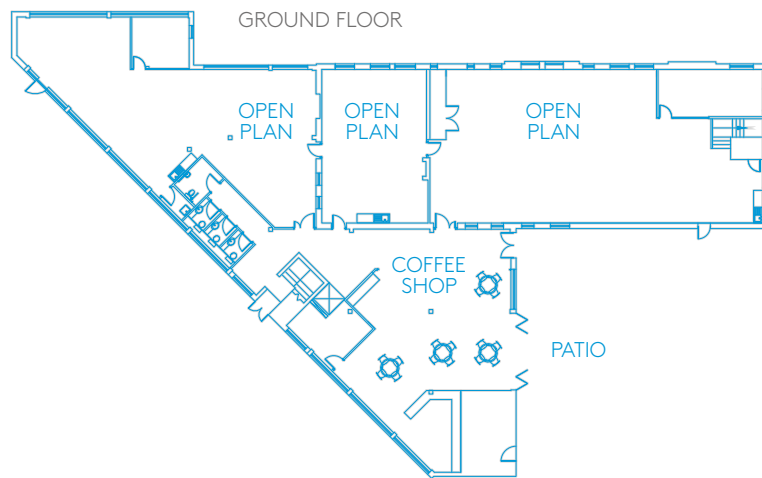


WELLBECK HOUSE

Ground floor: restaurant/coffee shop

First floor offices/open plan areas

THE WHARF
STUDIOS
LONDON



CABINS

CABIN A - Ground floor 968 sqft/90m²

CABIN B - First floor 32 sqft/30m²

